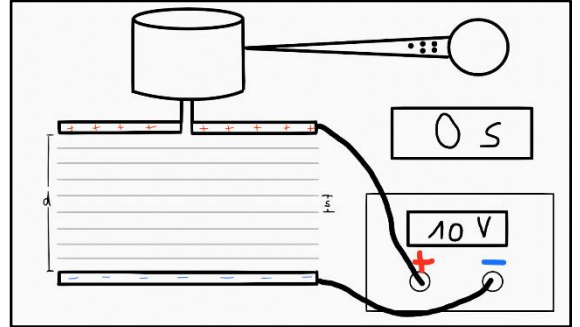


Arbeitsblatt – Millikan-Versuch (Schwebemethode)

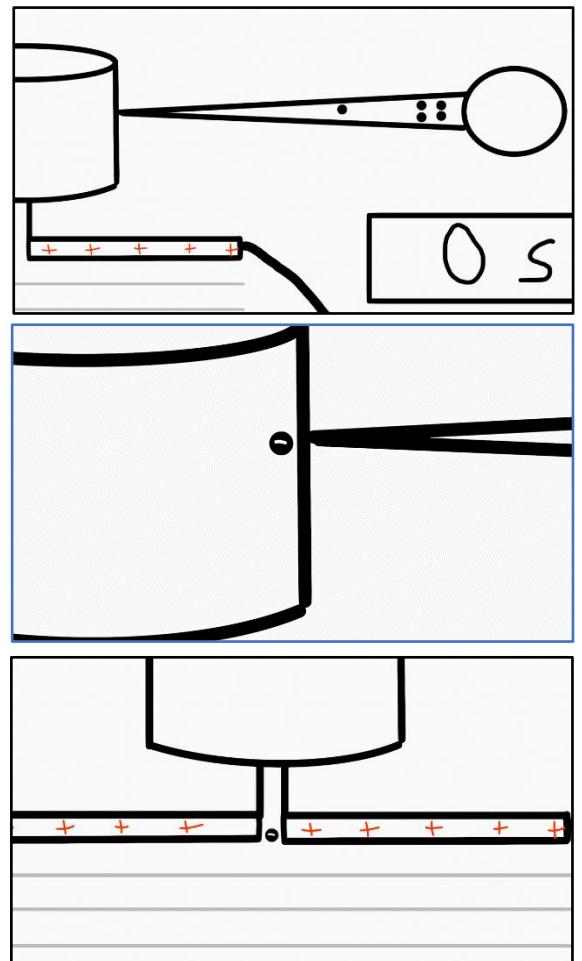
Aufgabe: Erläutere anhand des Millikan-Versuchs die grundlegenden Ideen und Ergebnisse zur Bestimmung der Elementarladung.

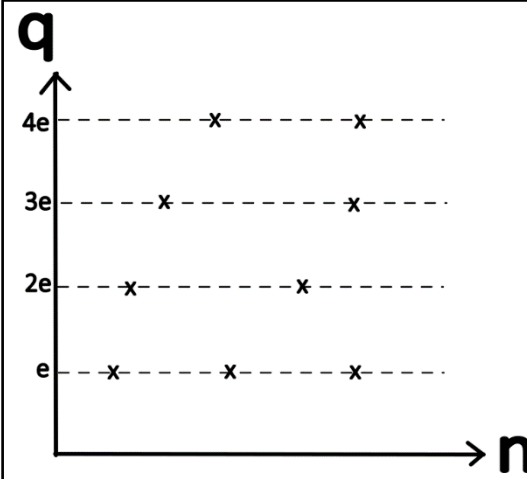
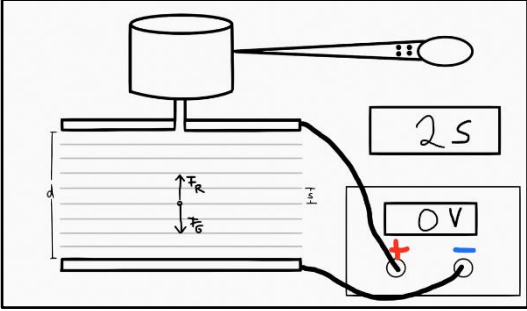
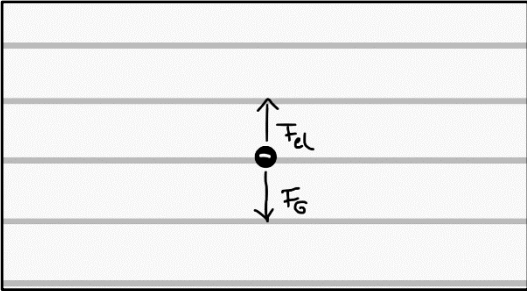
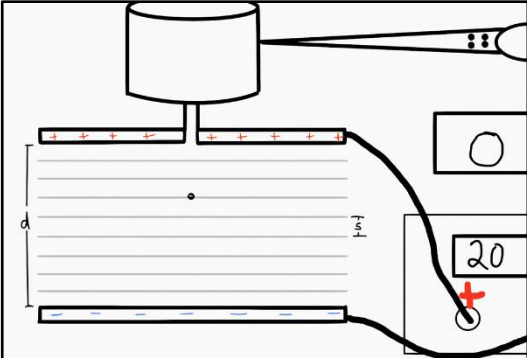
Schwebemethode

Aufbau: _____



Durchführung: _____





Formel:

$$q = \frac{g \cdot \sqrt{2^T \cdot \pi \cdot d}}{u} \cdot \sqrt{\frac{n^3 \cdot v_0^3}{\rho \cdot g}}$$

Ergebnis: